

## AO000145

### LED-LIGHTS • ADDITIONAL LIGHTS FOR CAMERA SYSTEMS

For any kind of inspection tasks with a camera sensor the lighting is essential, as only high-contrast images enable reproducible evaluations. Here the lighting has a decisive influence. The choice depends on different factors such as the distance to the test object, its size, the component criteria to be tested or the expected environmental conditions.



#### MECHANICAL DATA

Ambient temperature (MAX)	50 °C
Degree of protection (IP)	IP65
Front screen material	PMMA
Height	100 mm
Housing design	Cuboid
Housing material	Aluminium
Number of wires	4
Width	100 mm

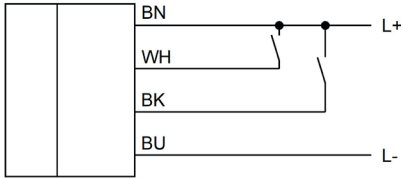
#### ELECTRICAL DATA

Max. current consumption	450 mA
Nominal supply voltage (MAX)	24 V
Nominal supply voltage (MIN)	24 V
Reverse polarity protection	Yes
Short-circuit-proof	Yes
Type of electrical connection	Cable
Voltage type	DC

#### OPTICAL DATA

Actual camera illumination	Yes
Light source	Polarity free red light
Light version	Surface area light
Wavelength of the lamp	660 nm

## CONNECTION



**Colors:** BN (brown), WH (white), BU (blue), BK (black)

**Functions:** BN = L+, WH = high power, BU = L-, BK = Input Trigger

## DIMENSIONAL DRAWING

### INSTALLATION



Mounting / Installation may only be carried out by a qualified electrician!

### DISPOSAL



### SAFETY WARNINGS

Before initial operation, please make sure to follow all safety instructions that may be provided in the product information!

LED lighting systems can generate very intense radiation, which, if used improperly, can possibly damage the eyes. For damage caused by improper use or connection, the manufacturer cannot be held responsible.

Never use these devices in applications where the safety of a person depends on their functionality.