

**AP000042**

**ACCESSORIES • MOUNTING**



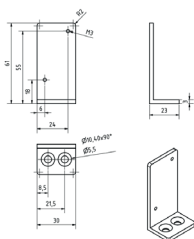
**MECHANICAL DATA**

Angle	90 °
Diameter/width of the fastening holes for sensor	2.5 mm
Diameter/width of the fastening holes for sensor	5.5 mm
Height	61 mm
Length	23 mm
Material	Stainless steel 1.4301
Mounting type	Screw
Number of boreholes	4
Thread pitch	0.5 mm
Thread size, metric	3
Version	Mounting angle bracket
Weight	0.05 kg
Width	30 mm

**OTHER DATA**

Scope of delivery	Angle
-------------------	-------

**DIMENSIONAL DRAWING**



## INSTALLATION



Mounting / Installation may only be carried out by a qualified electrician!

## DISPOSAL



## SAFETY WARNINGS

Before initial operation, please make sure to follow all safety instructions that may be provided in the product information!

Never use these devices in applications where the safety of a person depends on their functionality.