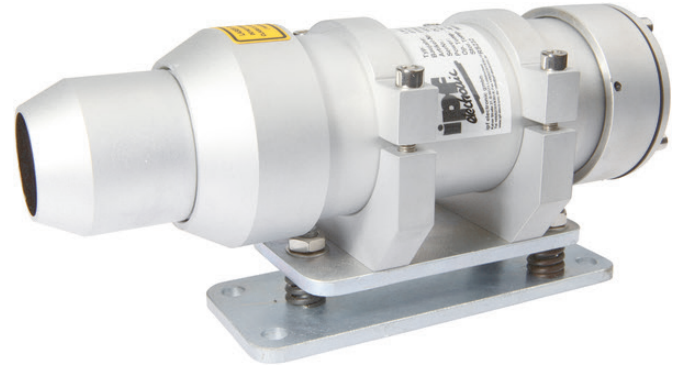


PT98C470

LASER SENSORS • DISTANCE MEASUREMENT

Optical sensors function contactlessly. They detect objects independent of their characteristics (e.g., shape, color, surface structure, material). The basic operating principle is based on the transmission and reception of light. There are three different versions: 1. The through-beam sensor consists of two separate devices, a transmitter and a receiver that are aligned with one another. If the light beam between the two devices is interrupted, the switching output integrated in the receiver changes its status. 2. With the retro-reflective sensor, the transmitter and receiver are located in one device. The emitted light beam is reflected back to the receiver by a reflector that is to be mounted opposite the device. As soon as the light beam is interrupted, the switching output integrated in the device changes its status. 3. With the diffuse reflection sensor, the transmitter and receiver are in one device. The emitted light beam is reflected by the object that is to be detected. As soon as the receiver detects the reflected light, the switching output integrated in the device changes its status.



MECHANICAL DATA

Ambient temperature (MAX)	60 °C
Ambient temperature (MIN)	-10 °C
Degree of protection (IP)	IP65
Housing coating	Anodised
Housing design	Special construction
Housing material	Aluminium
Sensor height	50 mm
Sensor length	255 mm
Sensor width	96 mm
Storage temperature (MAX)	70 °C
Storage temperature (MIN)	-20 °C

ELECTRICAL DATA

Measuring method for optical distance measurement	Phase comparison measurement
Measuring range length (MAX)	30000 mm
Measuring range length (MIN)	200 mm
No-load current	100 mA
Number of pins	8
Scanning principle	Push button
Standard for interfaces	RS-232
Supply voltage (MAX)	30 V
Supply voltage (MIN)	10 V
Type of analog output	4 mA ... 20 mA
Type of electrical connection	Plug-in connection
Type of switching output	PNP
Voltage type	DC

OPTICAL DATA

Laser protection class	Class 2
Light source	Laser diode, red light
Wavelength of the sensor	650 nm

DIMENSIONAL DRAWING**INSTALLATION**

Mounting / Installation may only be carried out by a qualified electrician!

DISPOSAL**SAFETY WARNINGS**

Before initial operation, please make sure to follow all safety instructions that may be provided in the product information!

Never use these devices in applications where the safety of a person depends on their functionality.