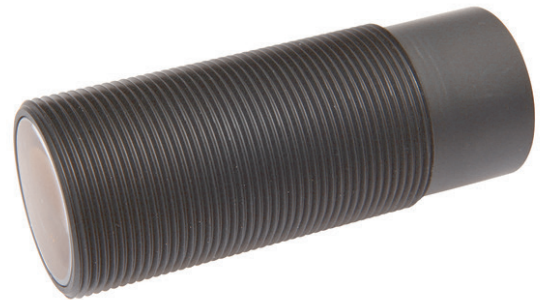


AL000046

ACCESSORIES • ATTACHMENT OPTICS



MECHANICAL DATA

Design	External thread
Diameter	34 mm
Housing coating	Anodised
Housing material	Aluminium
Length	85 mm
Material of optical surface	Glass
Thread pitch	1.5 mm
Thread size, metric	34
Type of accessories	Lens

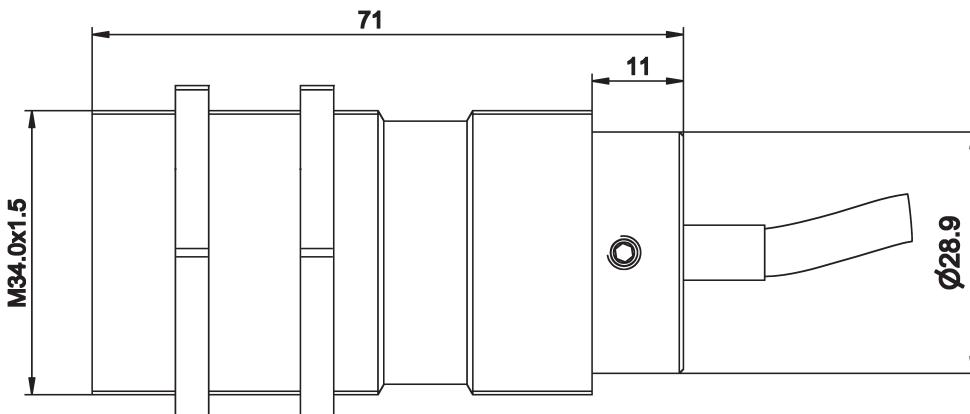
ELECTRICAL DATA

Switching distance (MAX)	250 mm
Switching distance (MIN)	100 mm

OTHER DATA

Suitable for diffuse reflection sensors	Yes
---	-----

DIMENSIONAL DRAWING



INSTALLATION



Mounting / Installation may only be carried out by a qualified electrician!

DISPOSAL



SAFETY WARNINGS

Before initial operation, please make sure to follow all safety instructions that may be provided in the product information!

Never use these devices in applications where the safety of a person depends on their functionality.