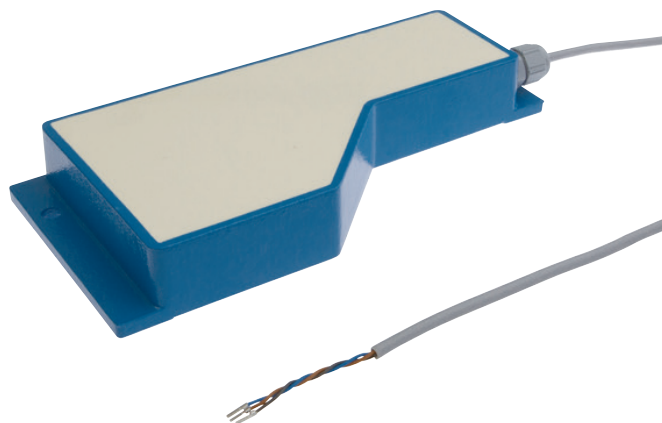


IY98E189

INDUCTIVE SENSORS • AREA

Inductive proximity switches are contact-free sensors. They detect all conductive metals, regardless of whether they move or not. The achievable sensing range of the devices depends on the object material and its dimensions. The vibration-resistant sensors can be approached laterally or frontally. Inductive proximity switches are used for presence detection (e.g. goods carriers), positioning (e.g. dampers), counting (e.g. nuts /bolts), speed detection (e.g. for cog wheels), on conveyor systems (e.g. hose feedings) or distance measurements (e.g. press-in checking) of metallic objects.



MECHANICAL DATA

Ambient temperature (MAX)	60 °C
Ambient temperature (MIN)	-10 °C
Cable length	5 m
Degree of protection (IP)	IP65
Housing material	Aluminium
Material of cable sheath	PVC
Mechanical mounting condition for sensor	Non-flush
Number of wires	3
Pressure-proof	No
Sensor height	30 mm
Sensor length	205 mm
Sensor width	95 mm

ELECTRICAL DATA

Cascadable	No
Connection to amplifier	Yes
Suitable for safety functions	No
Switching distance	50 mm
Type of electrical connection	Cable
Voltage type	DC
With monitoring function of downstream devices	No

OTHER DATA

Areas inquiry	Yes
Feeding technology	Yes

DIMENSIONAL DRAWING

INSTALLATION



Mounting / Installation may only be carried out by a qualified electrician!

DISPOSAL



SAFETY WARNINGS

Before initial operation, please make sure to follow all safety instructions that may be provided in the product information!

Never use these devices in applications where the safety of a person depends on their functionality.