

IB30C666

SAFETY SYSTEMS • INDUCTIVE SENSORS

Inductive proximity switches are contact-free sensors. They detect all conductive metals, regardless of whether they move or not. The achievable sensing range of the devices depends on the object material and its dimensions. The vibration-resistant sensors can be approached laterally or frontally. Inductive proximity switches are used for presence detection (e.g. goods carriers), positioning (e.g. dampers), counting (e.g. nuts /bolts), speed detection (e.g. for cog wheels), on conveyor systems (e.g. hose feedings) or distance measurements (e.g. press-in checking) of metallic objects.

MECHANICAL DATA

Active area material of sensor	PEEK
Ambient temperature	-20 °C ... 60 °C
Degree of protection (IP)	IP67
Housing coating	Nickel-plated
Housing design	Cylinder, screw-thread
Housing material	Brass
Mechanical mounting condition for sensor	Flush
Pressure-proof	No
Sensor length	113 mm
Thread length	65 mm
Thread pitch	1.5 mm
Thread size, metric	30

ELECTRICAL DATA

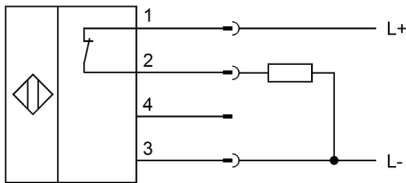
Cascadable	No
Hysteresis	15 %
IO-Link compatible	No
Max. output current	70 mA
Max. output current at safe output	70 mA
Number of pins	5
Number of safe semiconductor outputs	2
Response time	20 ms
Short-circuit-proof	Yes
Suitable for safety functions	Yes
Supply voltage	20 V ... 28 V
Switching distance	10 mm
Type of electrical connection	Connector M12
Type of switching function	Breaker contact
Type of switching output	PNP
Voltage type	DC
With LED display	Yes

ELECTRICAL DATA

With monitoring function of downstream devices

No

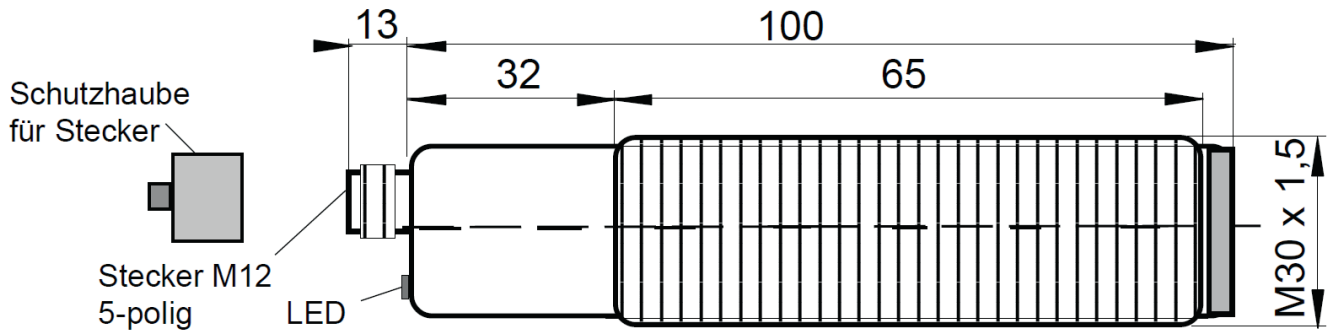
CONNECTION



Colors: 1 = BN (brown), 2 = WH (white), 3 = BU (blue), 4 = BK (black)

Functions: 1 = L+, 2 = PNP NC, 3 = L-, 4 = n. c.

DIMENSIONAL DRAWING



INSTALLATION



Mounting / Installation may only be carried out by a qualified electrician!

DISPOSAL



SAFETY WARNINGS

Before initial operation, please make sure to follow all safety instructions that may be provided in the product information!