

## IB080226

### INDUCTIVE SENSORS • ENLARGED SWITCHING DISTANCE

Inductive proximity switches are contact-free sensors. They detect all conductive metals, regardless of whether they move or not. The achievable sensing range of the devices depends on the object material and its dimensions. The vibration-resistant sensors can be approached laterally or frontally. Inductive proximity switches are used for presence detection (e.g. goods carriers), positioning (e.g. dampers), counting (e.g. nuts /bolts), speed detection (e.g. for cog wheels), on conveyor systems (e.g. hose feedings) or distance measurements (e.g. press-in checking) of metallic objects.



#### MECHANICAL DATA

Active area material of sensor	PBTP
Ambient temperature (MAX)	70 °C
Ambient temperature (MIN)	-25 °C
Degree of protection (IP)	IP67
Housing coating	Chromium-plated
Housing design	Cylinder, screw-thread
Housing material	Nickel silver
Mechanical mounting condition for sensor	Flush
Pressure-proof	No
Sensor length	66 mm
Thread length	44 mm
Thread pitch	1 mm
Thread size, metric	8

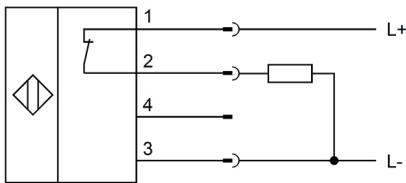
#### ELECTRICAL DATA

Cascadable	No
Correction factor (aluminum)	0.3
Correction factor (brass)	0.41
Correction factor (copper)	0.27
Correction factor (St37)	1
Correction factor (stainl. steel)	0.72
Hysteresis	10 %
Max. output current	200 mA
No-load current	10 mA
Norm measuring plate	9x9x1
Number of pins	3
Relative repeat accuracy	5 %
Reverse polarity protection	Yes
Short-circuit-proof	Yes
Suitable for safety functions	No
Supply voltage (MAX)	30 V

## ELECTRICAL DATA

Supply voltage (MIN)	10 V
Switching distance	3 mm
Switching frequency	1000 Hz
Type of electrical connection	Connector M12
Type of switching function	Breaker contact
Type of switching output	PNP
Voltage drop	2 V
Voltage type	DC
With LED display	Yes
With monitoring function of downstream devices	No

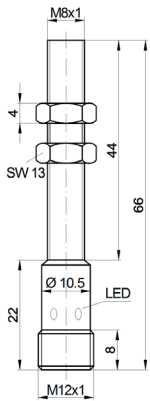
## CONNECTION



**Colors:** 1 = BN (brown), 2 = WH (white), 3 = BU (blue), 4 = BK (black)

**Functions:** 1 = L+, 2 = PNP NC, 3 = L-, 4 = n. c.

## DIMENSIONAL DRAWING



## INSTALLATION



Mounting / Installation may only be carried out by a qualified electrician!

## DISPOSAL



## SAFETY WARNINGS

Before initial operation, please make sure to follow all safety instructions that may be provided in the product information!

Never use these devices in applications where the safety of a person depends on their functionality.