

AL000016

ACCESSORIES • FIBER OPTICS

accessories fiber optic, Adapter, barrier, diffuse-reflection sensor, Ø1,1mm 20long, Duplex, Plastic



MECHANICAL FEATURES

Diameter	1.1 mm
Height	15 mm
Length	20.5 mm
Material	Plastic
Type of accessory	Adapter
Width	6.5 mm

ELECTRICAL FEATURES

Cable type	Duplex
------------	--------

OPTICAL FEATURES

Suitable for color recognition	-
Suitable for infrared light	-

OTHER FEATURES

Is zoom lens	-
Suitable for diffuse reflection sensors	+
Suitable for through-beam sensors	+

Other

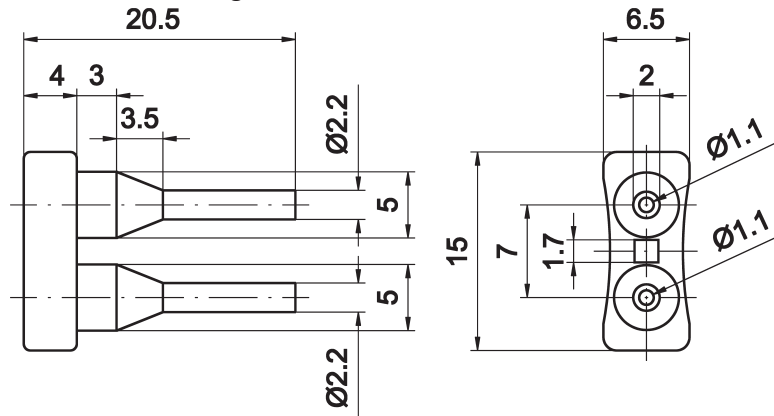
Packaging dimensions	70mm x 10mm x 120mm
Shipping weight	0kg
Tariff code	90011090

Classification

ipf product group	900
eClass 8.0	27279208
eClass 9.0	27273692
eClass 9.1	27273692
ETIM-5.0	EC002609
ETIM-6.0	EC002609
ETIM-7.0	EC002609

Connection

Dimensional drawing



Installation



Mounting / installation may only be carried out by a qualified electrician!

Disposal



Software

Any software, drivers or IODD files that may be required to operate your device can be downloaded free of charge from our homepage: www.ipf-electronic.com

Safety warnings

Before initial operation, please make sure to follow all safety instructions that may be provided in the product information. Never use these devices in applications where the safety of a person depends on their functionality. LED lighting systems can generate intensive UV radiation, which can damage your eyes in case of improper use. The manufacturer cannot be held responsible for damages that result from improper use or connection.