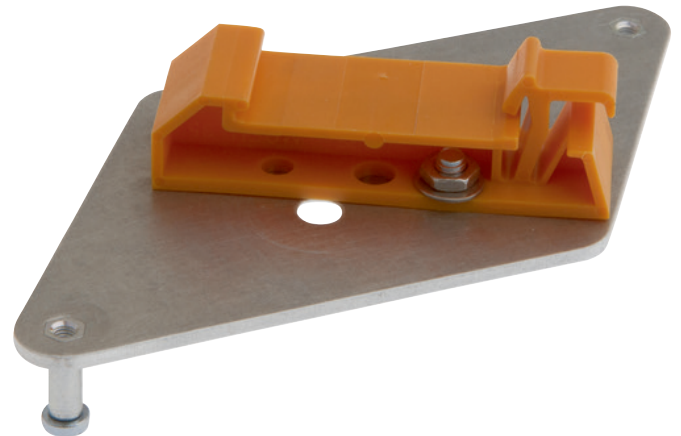


AO98C526**ACCESSORIES • MOUNTING****MECHANICAL DATA**

Connection type	Snap connection
DIN-rail adapter design	Straight
Height	74 mm
Length	113 mm
Material	Metal
Mounting type	DIN rail (top hat rail) 35 mm
Width	2 mm

DIMENSIONAL DRAWING**INSTALLATION**

Mounting / Installation may only be carried out by a qualified electrician!

DISPOSAL**SAFETY WARNINGS**

Before initial operation, please make sure to follow all safety instructions that may be provided in the product information!

Never use these devices in applications where the safety of a person depends on their functionality.