

AF000003

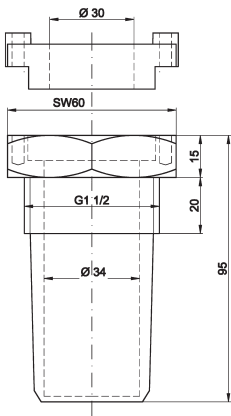
ACCESSORIES • FILLING LEVEL



MECHANICAL DATA

Color	Grey
Diameter	60 mm
Installation depth	60 mm
Length	95 mm
Material	Crastin
Mounting type	Screw
Pressure resistance	6 bar
Screw thread, full length	No
Surface	Untreated
Thread size, inches	1.1/2 inch
Tightening torque (MAX)	3 Nm
Type of accessories	Mounting sleeve

DIMENSIONAL DRAWING



INSTALLATION

DISPOSAL



Mounting / Installation may only be carried out by a qualified electrician!



SAFETY WARNINGS

Before initial operation, please make sure to follow all safety instructions that may be provided in the product information!

Never use these devices in applications where the safety of a person depends on their functionality.