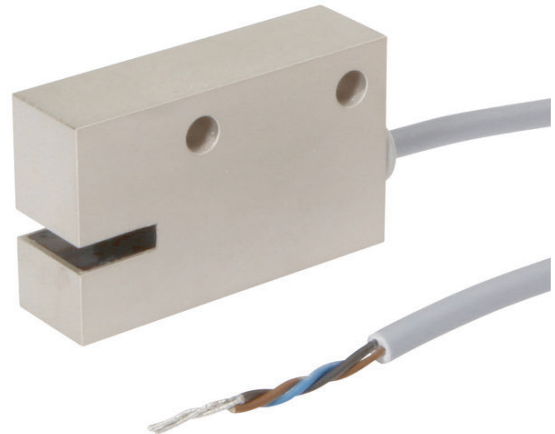


OG032280

OPTICAL SENSORS • FORK LIGHT BARRIERS

Special design of through-beam sensor. Transmitter and receiver are located in the fork or angular limbs and are perfectly aligned to each other.



MECHANICAL DATA

Fork depth	10 mm
Fork light barrier design	Furcate
Fork width	3 mm
Housing design	Cuboid
Housing material	Brass
Sensor height	25 mm
Sensor length	12 mm
Sensor width	41 mm

ELECTRICAL DATA

Analogue output -10 V ... +10 V	No
Analogue output 4 mA ... 20 mA	No
Decay time	0.01 ms
Hysteresis	0.1 mm
Max. output current	100 mA
Max. switching distance	3 mm
No-load current	24 mA
Number of pins	3
Number of semiconductor outputs with signaling function	1
Operating voltage (MAX)	30 V
Operating voltage (MIN)	4.5 V
Rated control supply voltage U_s at DC (MAX)	30 V
Rated control supply voltage U_s at DC (MIN)	4.5 V
Relative repeat accuracy	0.01 mm
Repeatability +/-	10 μ m
Response time	0.01 ms
Scanning function	Light switching
Suitable for safety functions	No
Type of electrical connection	Cable
Type of switching function	Breaker contact (NC)
Type of switching output	PNP

ELECTRICAL DATA

Type of the forked light barrier	Standard
Voltage drop	1 V
Voltage type	DC
With communication interface, analog	No
With communication interface, AS-Interface	No
With communication interface, CANOpen	No
With communication interface, DeviceNet	No
With communication interface, Ethernet	No
With communication interface, INTERBUS	No
With communication interface, PROFIBUS	No
With communication interface, RS-232	No
With communication interface, RS-422	No
With communication interface, RS-485	No
With communication interface, SSD	No
With communication interface, SSI	No
With monitoring function of downstream devices	No
With other analog output	No
With restart lock	No

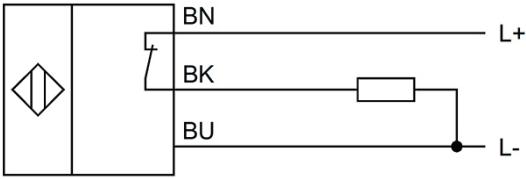
OPTICAL DATA

Laser protection class	None
Light beam form	Point
Light source	Infrared light
Resolution	800 µm
Wavelength of the sensor	935 nm

OTHER DATA

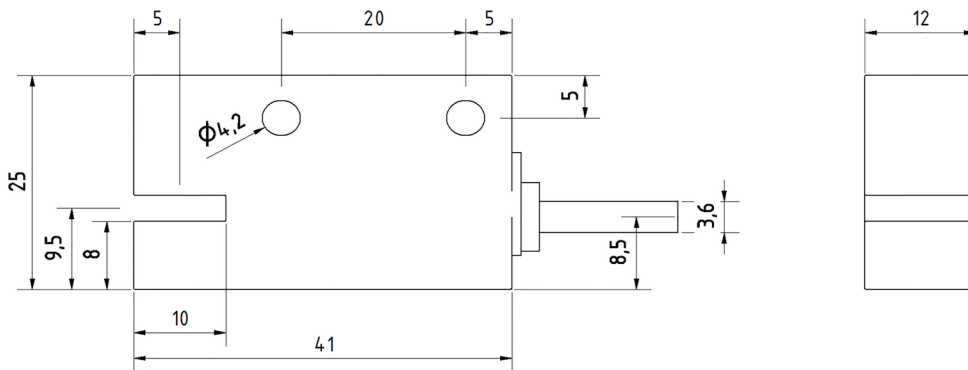
Feeding technology	Yes
--------------------	-----

CONNECTION



Colors: BN (brown), BU (blue), BK (black)
Functions: BN = L+, BU = L-, BK = PNP NC

DIMENSIONAL DRAWING



INSTALLATION



Mounting / Installation may only be carried out by a qualified electrician!

DISPOSAL



SAFETY WARNINGS

Before initial operation, please make sure to follow all safety instructions that may be provided in the product information!

Never use these devices in applications where the safety of a person depends on their functionality.