

**AO98E100**

**LED-LIGHTS • ADDITIONAL LIGHTS FOR CAMERA SYSTEMS**

For any kind of inspection tasks with a camera sensor the lighting is essential, as only high-contrast images enable reproducible evaluations. Here the lighting has a decisive influence. The choice depends on different factors such as the distance to the test object, its size, the component criteria to be tested or the expected environmental conditions.



**MECHANICAL DATA**

Ambient temperature (MAX)	40 °C
Degree of protection (IP)	IP51
Front screen material	Acrylic glass
Height	20 mm
Housing design	Cuboid
Housing material	Aluminium
Length	520 mm
Width	178 mm

**ELECTRICAL DATA**

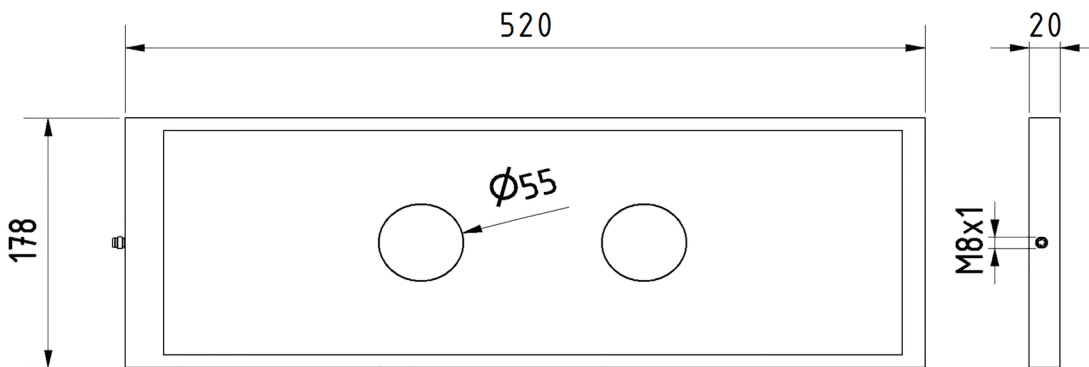
Lamp power	31.2 W
Max. current consumption	190 mA
Nominal supply voltage (MAX)	24 V
Nominal supply voltage (MIN)	24 V
Number of pins	4
Type of electrical connection	Connector M8
Voltage type	DC

**OPTICAL DATA**

Actual camera illumination	Yes
Color temperature	5000 K
Light source	Cold white
Light version	Surface area light
Radiation angle	120 °
With lamp	Yes

**OTHER DATA**

Risk groups	0
-------------	---

**DIMENSIONAL DRAWING****INSTALLATION**

Mounting / Installation may only be carried out by a qualified electrician!

**DISPOSAL****SAFETY WARNINGS**

Before initial operation, please make sure to follow all safety instructions that may be provided in the product information!

LED lighting systems can generate very intense radiation, which, if used improperly, can possibly damage the eyes. For damage caused by improper use or connection, the manufacturer cannot be held responsible.

Never use these devices in applications where the safety of a person depends on their functionality.