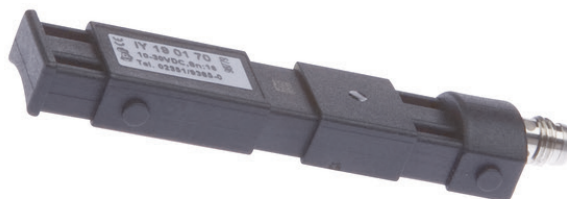


IY190170

INDUCTIVE SENSORS • SENSORS FOR HOSE MOUNTING

Inductive proximity switches are contact-free sensors. They detect all conductive metals, regardless of whether they move or not. The achievable sensing range of the devices depends on the object material and its dimensions. The vibration-resistant sensors can be approached laterally or frontally. Inductive proximity switches are used for presence detection (e.g. goods carriers), positioning (e.g. dampers), counting (e.g. nuts /bolts), speed detection (e.g. for cog wheels), on conveyor systems (e.g. hose feedings) or distance measurements (e.g. press-in checking) of metallic objects.



MECHANICAL DATA

Active area material of sensor	PA 6.6 (synthetic)
Ambient temperature (MAX)	75 °C
Ambient temperature (MIN)	-25 °C
Degree of protection (IP)	IP67
Housing design	Cuboid
Housing material	PA 6.6 (synthetic)
Mechanical mounting condition for sensor	Non-flush
Pressure-proof	No
Sensor height	78.5 mm
Sensor length	9 mm
Sensor width	19 mm

ELECTRICAL DATA

Cascadable	No
Hysteresis	15 %
Max. output current	200 mA
No-load current	10 mA
Number of pins	3
Pulse stretching	100 ms
Pulse stretching	100 ms
Relative repeat accuracy	10 %
Reverse polarity protection	Yes
Short-circuit-proof	Yes
Suitable for safety functions	No
Supply voltage (MAX)	30 V
Supply voltage (MIN)	10 V
Switching behavior of the output	Dynamic
Switching distance	16 mm
Type of electrical connection	Connector M8
Type of switching function	Normally open contact
Type of switching output	PNP

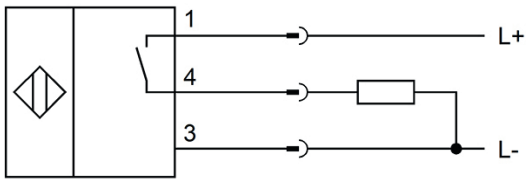
ELECTRICAL DATA

Voltage drop	2.4 V
Voltage type	DC
With LED display	Yes
With monitoring function of downstream devices	No

OTHER DATA

Devices for hose mounting	Yes
Feeding technology	Yes

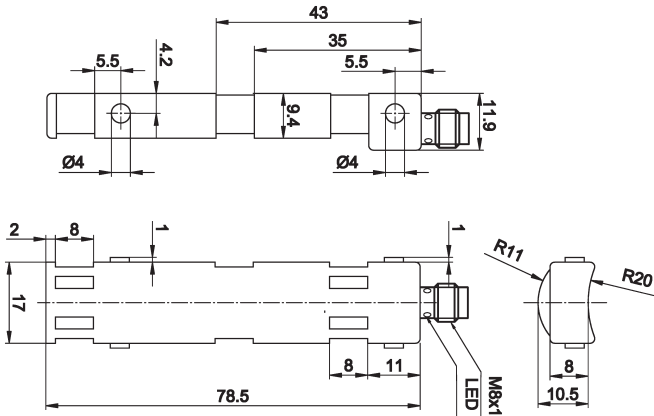
CONNECTION



Colors: 1 = BN (brown), 3 = BU (blue), 4 = BK (black)

Functions: 1 = L+, 3 = L-, 4 = PNP NO

DIMENSIONAL DRAWING



INSTALLATION



Mounting / Installation may only be carried out by a qualified electrician!

DISPOSAL



SAFETY WARNINGS

Before initial operation, please make sure to follow all safety instructions that may be provided in the product information!

Never use these devices in applications where the safety of a person depends on their functionality.