

## VK200421

### CONNECTION TECHNOLOGY • CABLE SOCKETS /CONNECTORS ONE-SIDED PRE-ASSEMBLED

ipf cable sockets are used primarily for establishing the electrical connection of sensors. Their features are characterized by rugged design, the highest protection classes (IP67 | IP68 | IP69K) and, if desired, with 360° shielding. With the features: bus-ready, suitable for use with drag chains and robots, resistance to oil and chemicals, resistance to welding sparks, their resistance to cleaning agents or high-pressure and steam-jet cleaning, the expanded temperature range of up to +230°C, the rapid interconnection technology and special data transmission properties, the cable sockets meet all requirements in automation technology.



#### MECHANICAL DATA

|   |                      |
|---|----------------------|
| Cable length  | 2 m                  |
| Degree of protection (IP)                             | IP67                 |
| Material of cable sheath                              | PUR (Polyurethane)   |
| Number of wires                                       | 4                    |
| Perm. ambient temperature of cable, fixed cable (MAX) | 90 °C                |
| Perm. ambient temperature of cable, fixed cable (MIN) | -30 °C               |
| Positioning of cable feed, field side                 | Angled               |
| Positioning of cable feed, housing side               | Straight             |
| Suitable for trailing chain                           | Yes                  |
| Wire assembly   | 42 x 0.1mm           |
| Wire cross section                                    | 0.34 mm <sup>2</sup> |

#### ELECTRICAL DATA

|   |                    |
|---|--------------------|
| Line diameter                               | 4.7 mm             |
| Number of pins                              | 4                  |
| Rated current I <sub>n</sub>                | 4 A                |
| Type of electrical connection, field side   | M12                |
| Type of electrical connection, housing side | Free conductor end |
| Type of plug-in contact, field side         | Female (socket)    |
| With LED display                            | Yes                |

#### OTHER DATA

|                            |                                 |
|----------------------------|---------------------------------|
| Flame resistant            | In accordance with EN 60332-2-2 |
| Free of LABS               | Yes                             |
| Halogen-free               | Yes                             |
| Hydrolysis-proof           | Yes                             |
| IR-networked               | No                              |
| Oil and cooling lubricants | Yes                             |
| Ozone and UV-resistant     | Yes                             |
| RoHs-compliant             | Yes                             |
| Silicone-free              | Yes                             |

## OTHER DATA

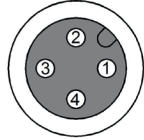
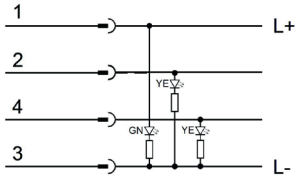
Suitable for trailing chain and torsion resistant

Yes

Welding area

Yes

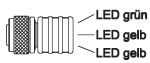
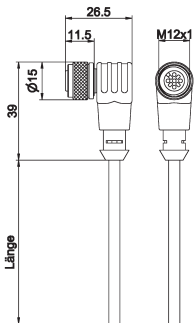
## CONNECTION



**Colors:** 1 = BN (brown), 2 = WH (white), 3 = BU (blue), 4 = BK (black)

**Functions:**

## DIMENSIONAL DRAWING



## INSTALLATION



Mounting / Installation may only be carried out by a qualified electrician!

## DISPOSAL



## SAFETY WARNINGS

Before initial operation, please make sure to follow all safety instructions that may be provided in the product information!

Never use these devices in applications where the safety of a person depends on their functionality.